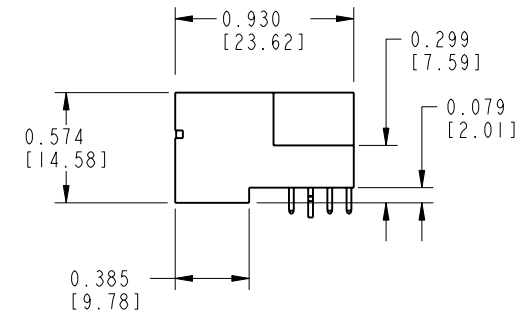
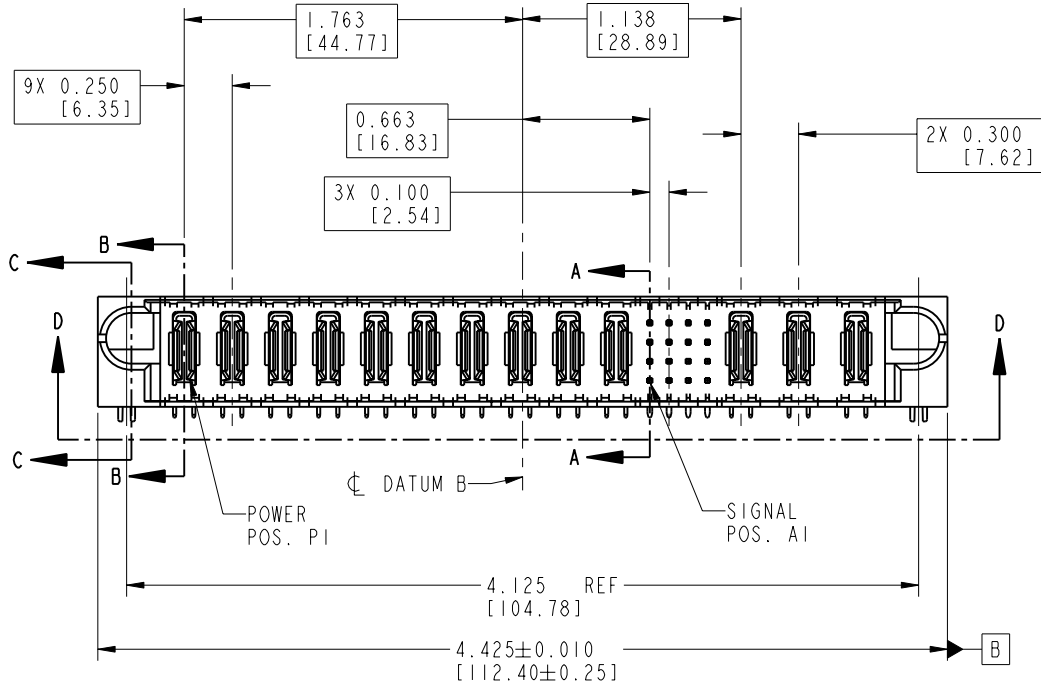
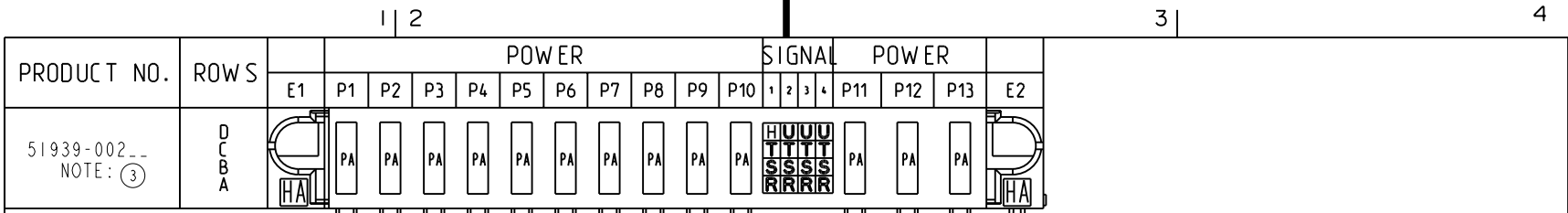


Tous droits strictement réservés. Reproduction ou communication o des liens interdité sous quelque forme que ce soit sans autorisation écrite du propriétaire. Propriete de c FCI. Droits de reproduction FCI.

All rights strictly reserved. Reproduction or issue to third parties in any form whenever is not permitted without written authority from the proprietor. Property of FCI. Copyright FCI.



CODE	DIM "M" MATING LENGTH	DIM "T" TAIL LENGTH	CONTACT TYPE
H	0.220 [5.59]	0.135 [3.43]	SIGNAL
R	0.270 [6.86]	0.135 [3.43]	SIGNAL
S	0.270 [6.86]	0.135 [3.43]	SIGNAL
T	0.270 [6.86]	0.135 [3.43]	SIGNAL
U	0.270 [6.86]	0.135 [3.43]	SIGNAL
PA	N/A [N/A]	0.135 [3.43]	POWER
HA	N/A [N/A]	N/A [N/A]	HOLD-DOWN

mat'l code				SEE NOTE 1		tolerances unless otherwise specified		CUSTOMER	
ltr	ecn no.	dr	date	linear	.XX±.01/0.X±0.3	projection	COPY		
A	V12512	JWS	10/22/01	angles	.XXX±.005/0.XX±0.13		title 10P + 16S + 3ACP		
B	V12538	JWS	11/21/01		.XXX±.0020/0.XXX±0.051		RIGHT ANGLE SOLDER HEADER		
C	V03-0571	TAB	05/21/03		0°±2°		product family PwrBlade code 213		
D	DG06-0008	JMG	01/07/06	dr	J. SHAFFER 10/22/01	MM	size	dwg no	sheet
				engr	J. ALLISON 10/22/01	1:1	A	51939-002	1 of 4
				chr	J. ALLISON 10/22/01				
				appd	J. ALLISON 10/22/01				
sheet index	revision sheet	D 1	D 2	D 3	D 4				

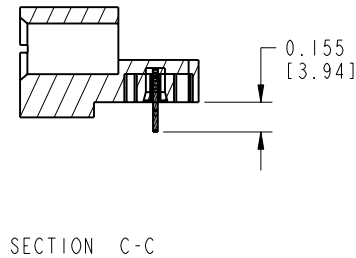
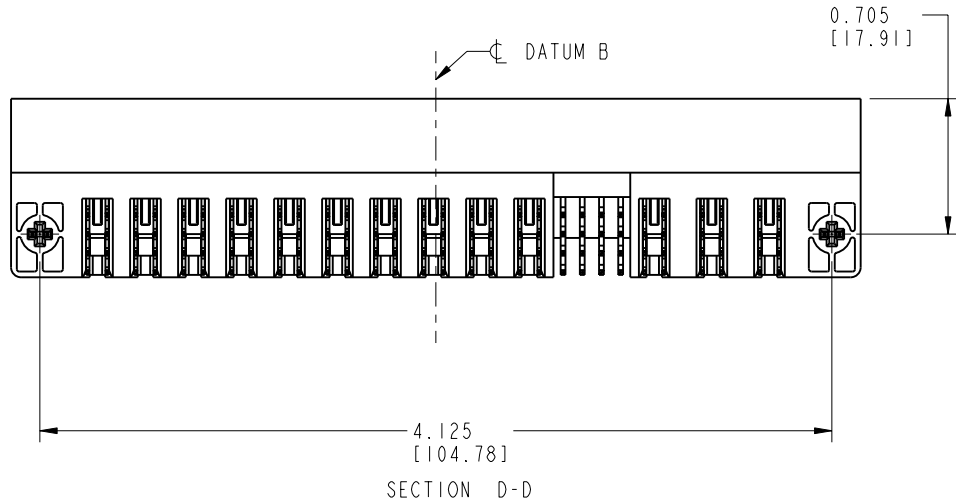
		www.fciconnect.com	
product family		PwrBlade	
size		dwg no	
A		51939-002	
code		213	
sheet		1 of 4	

Tous droits strictement réservés. Reproduction ou communication o des liers interdite sous quelque forme que ce soit sans autorisation écrite du propriétaire. Propriété de c FCI. Droits de reproduction FCI.

All rights strictly reserved. Reproduction or issue to third parties in any form, whatever is not permitted without written authority from the proprietor. Property of FCI. Copyright FCI.

PRODUCT NUMBER

51939-002  
NOTE: (3)



0.025 REF TYP [0.64]  
⊕ 0.010 [0.25] A B C

0.705 [17.91]

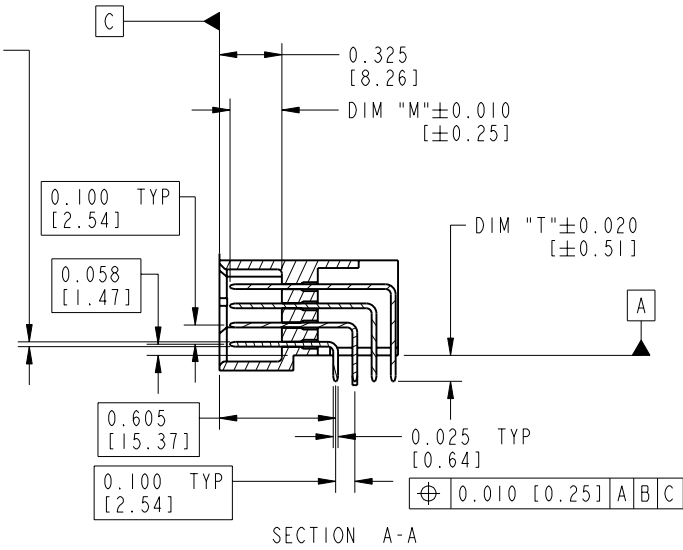
4.125 [104.78]

SECTION D-D

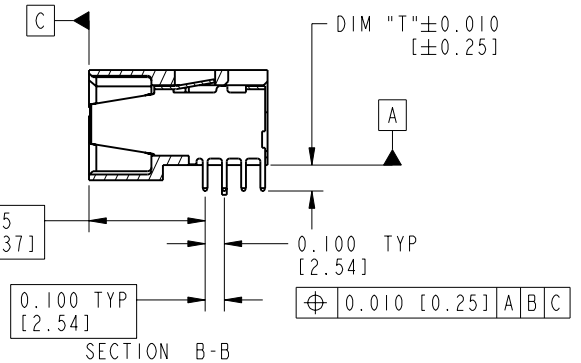
SECTION C-C

3

4



SECTION A-A



SECTION B-B

mat'l code				SEE NOTE 1		tolerances unless otherwise specified		CUSTOMER		 www.fciconnect.com	
ltr	ecr no.	dr	date	linear	.XX±.01/0.X±0.3		COPY		 projection	title	
D					.XXX±.005/0.XX±0.13		 INCH/MM			10P + 16S + 3ACP	
				angles	.XXX±.0020/0.XX±0.051		 scale		RIGHT ANGLE SOLDER HEADER		
					° ±°		1:1		product family		
				dr	J. SHAFFER	10/22/01			PwrBlade		
				enr	J. ALLISON	10/22/01			code		
				chr	J. ALLISON	10/22/01			213		
				appd	J. ALLISON	10/22/01			sheet		
sheet index		revision sheet						A		51939-002	
										2	

cage code 22526

Pro/E

3

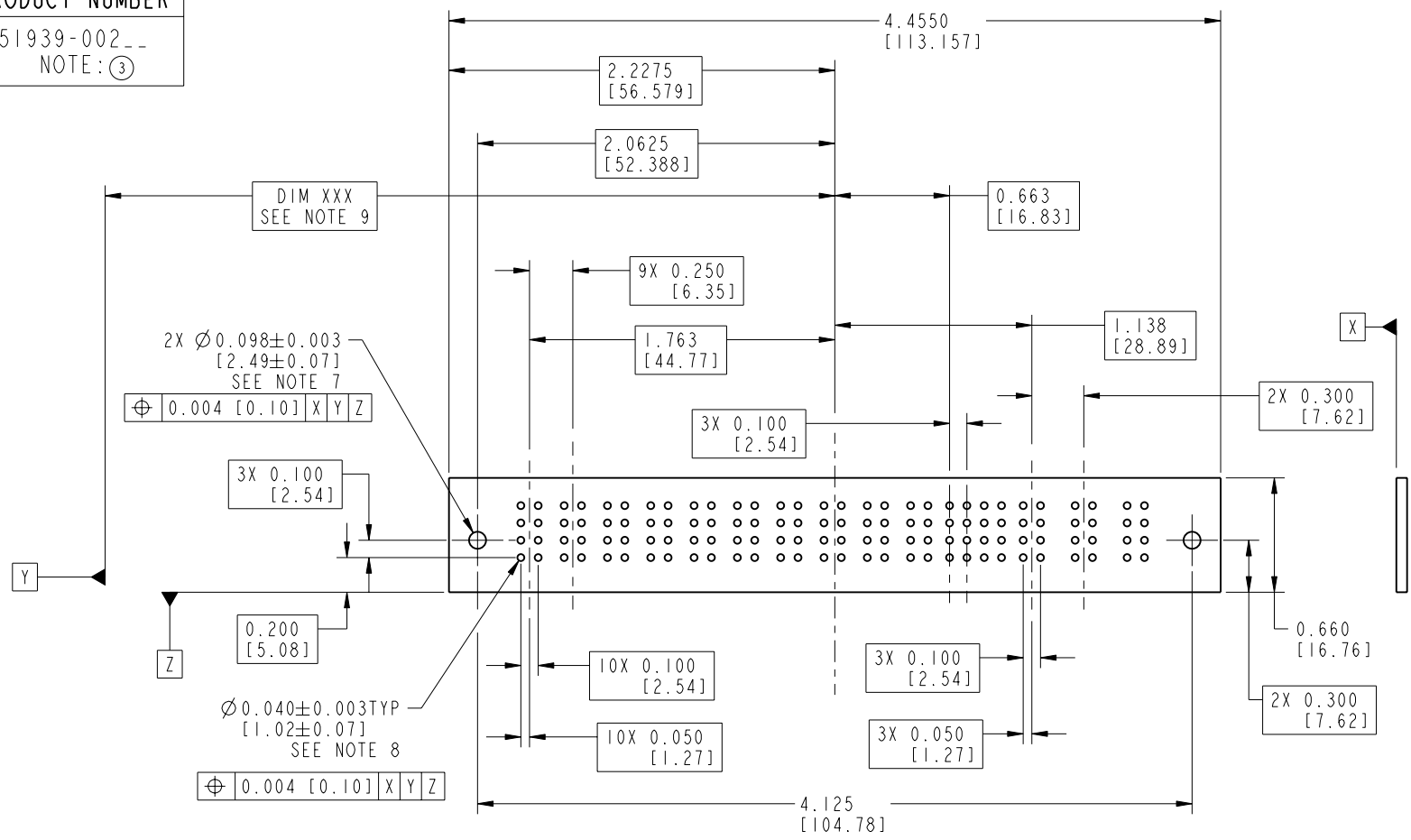
4

Tous droits strictement réservés. Reproduction ou communication o des liens interdite sous quelque forme que ce soit sans autorisation écrite du propriétaire. Propriété de c FCI. Droits de reproduction FCI.

All rights strictly reserved. Reproduction or issue to third parties in any form whatever is not permitted without written authority from the proprietor. Property of FCI. Copyright FCI.



PRODUCT NUMBER  
51939-002--  
NOTE: ③



mat'l code				SEE NOTE 1		tolerances unless otherwise specified		CUSTOMER		 www.fciconnect.com	
ltr	ecn no.	dr	date	linear	.XX±.01/0.X±0.3	projection		COPY		title	
D				angles	.XXX±.005/0.XX±0.13					10P + 16S + 3ACP	
				dr	.XXX±.0020/0.XXX±0.051					RIGHT ANGLE SOLDER HEADER	
				engr	0°±2°	INCH/MM		product family		code	
				chr	J. SHAFFER 10/22/01	scale		PwrBlade		213	
				appd	J. ALLISON 10/22/01	1:1		size		sheet	
					J. ALLISON 10/22/01			A		3	
sheet index		revision sheet									

cage code 22526

Pro/E

Tous droits strictement reserves. Reproduction ou communication o des liers interdite sous quelque forme que ce soit sans autorisation ecrite du proprietaire. Propriete de c FCI. Droits de reproduction FCI.

All rights strictly reserved. Reproduction or issue to third parties in any form, whatever is not permitted without written authority from the proprietor. Property of FCI. Copyright FCI.



PRODUCT NUMBER

51939-002--  
NOTE: ③

NOTES:

1. DIMENSIONS AND TOLERANCES ARE IN ACCORDANCE WITH ASME Y14.5M, UNLESS OTHERWISE SPECIFIED.

CONNECTOR NOTES

- 2. HOUSING MATERIAL: UL 94 V-0 GLASS FILLED HIGH TEMP THERMOPLASTIC  
POWER CONTACT MATERIAL: COPPER ALLOY  
SIGNAL CONTACT MATERIAL: COPPER ALLOY
- 3. 51939-002;51939-002LF;51939-002GLF PLATING SPEC. SEE PRINT:10064183
- 4. "MANUFACTURER" NAME, P/N, AND DATE CODE TO APPEAR ON THIS SURFACE
- 5. PRODUCT SPECIFICATION GS-12-149

PCB NOTES:

- 6. ALL HOLE DIAMETERS ARE FINISHED HOLE SIZE
- 7.  $\varnothing 0.098[2.49]$  THROUGH HOLES ARE UNPLATED.
- 8.  $\varnothing 0.0453 \pm 0.0010 [1.151 \pm 0.025]$  DRILLED HOLES PLATED WITH 0.0003 [0.008] MIN SnPb OVER 0.001 [0.03] TO 0.003 [0.08] Cu PLATING TO ACHIEVE A  $\varnothing 0.040 \pm 0.003 [1.02 \pm 0.07]$  HOLE.
- 9. "DIM "XXX" TO BE DETERMINED BY THE CUSTOMER.

mat'l code		SEE NOTE 1		tolerances unless otherwise specified		CUSTOMER		www.fciconnect.com	
ltr	ecn no.	dr	date	linear	.XX±.01/0.X±0.3	COPY			
D				linear	.XXX±.005/0.XX±0.13	projection			title 10P + 16S + 3ACP RIGHT ANGLE SOLDER HEADER
				angles	.XXX±.0020/0.XXX±0.051 0°±?	INCH/MM			
				dr	J. SHAFFER 10/22/01	scale		product family PwrBlade code 213 size dwg no A 51939-002 sheet 4	
				enr	J. ALLISON 10/22/01	1:1			
				chr	J. ALLISON 10/22/01				
				appd	J. ALLISON 10/22/01				
sheet index	revision sheet								

cage code 22526

Pro/E